



COMPANY PROFILE





About Us

Phala Blasting and Civils (Pty) Ltd is a newly registered company built on a strong foundation of over 15 years of experience in the blasting and civils industry. Our team consists of skilled and experienced workers, contractors, and operators who have been actively involved in the rock blasting and drilling sector for more than a decade.

We pride ourselves on having the knowledge, expertise, and equipment to successfully complete every project within the timeframe agreed upon with our clients.

Phala Blasting and Civils' success lies in the combination of our technical expertise, industry experience, and unwavering commitment to reliability and safety. We believe in building and maintaining strong relationships with our clients to ensure that we fully understand and meet the unique blasting and drilling requirements of each site.

At Phala Blasting and Civils, our goal is to deliver professional, efficient, and cost-effective solutions — safely and on time, every time.



Mission & Vision.

MISSION

To be a leading and trusted provider of blasting and civils solutions in South Africa, renowned for safety, efficiency, and technical excellence.

VISION

To deliver professional, reliable, and cost-effective blasting and civils services by leveraging our expertise, experienced team, and advanced equipment, while maintaining the highest standards of safety and client satisfaction.

Our Services



Controlled Blasting

Precise use of explosives to fracture rock while minimizing vibration and damage to surrounding areas and structures. Planned and executed to maximize safety, efficiency and compliance with regulatory requirements.



Chemical Rock Breaking

A silent, non-explosive demolition method using an expanding rock-breaking mortar. Supplied as a powder that is mixed with water to form a grout which gradually expands, cracking rock where conventional methods are impractical or restricted.



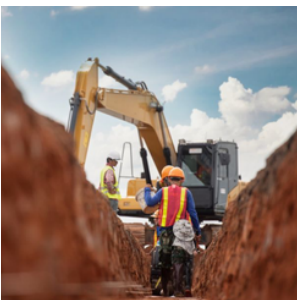
Construction Site Preparation

Demolition of existing structures and reduction or removal of rock to achieve required formation levels. Delivered safely and on schedule to prepare sites for follow-on civil or structural work.



Road Infrastructure Projects

Rock excavation and blasting support for new road construction, road widening and other transport infrastructure — especially where rock formations or difficult terrain are encountered.



Trench Excavation

Specialist trenching for pipelines, cables and utilities in hard rock or challenging ground conditions, using blasting or chemical breaking methods to achieve clean, accurate trenches.

Chemical Rock Breaking

Expansive chemical agents are engineered mortars or grouts that expand as they cure, exerting splitting forces that fracture rock, concrete, and reinforced concrete with controlled, predictable results.

They offer the advantages of reduced noise, lower ground vibration, and virtually no flying debris compared to traditional blasting methods. This makes them ideal for urban works, sensitive sites, and projects with strict safety or regulatory constraints.

Common Applications

- Rock breaking and tunnel pre-splitting
- Boulder cracking and removal
- Concrete splitting and controlled demolition
- Swimming pool excavation and landscaping works
- Hard landscaping and stone shaping
- Reinforced-concrete structure demolition
- Foundation and sub-structure removal
- Site clearing and preparation

Technical Note

The expanding mortar can produce forces up to 18,000 psi ($\approx 1,241$ bar) during curing—enough to crack and split most rock types, concrete, and reinforced concrete when used in appropriately drilled holes and according to manufacturer guidelines.





Rock Drilling

Purpose

At Phala Blasting and Civils, our drilling and blasting services are designed to deliver precise rock excavation solutions at low production costs. Each project is carefully planned by our team of licensed blasters, who determine the optimal number, depth, and pattern of drill holes. Once drilled, these holes are loaded with controlled quantities of explosives to achieve efficient and accurate rock breakage.

Process

In trench drilling, smaller diameter blast holes are typically used to ensure optimal distribution of explosives within the rock. As a general rule, the hole diameter should be approximately 1/60 of the trench width.

In traditional trench blasting, the central holes are positioned slightly ahead of the lateral holes, and each hole contains an equal amount of explosives. In contrast, smooth wall trench blasting aligns all holes in each row, with heavier charges in the central holes and lighter charges along the edges.

By combining custom designs with industry-standard drilling patterns, the Phala Blasting and Civils team ensures every project is executed safely, efficiently, and to the highest quality standards.



Trench blasting and drilling

Purpose

Trenches are excavated for pipelines (water, sewage) and for cable routing. Phala Blasting and Civils applies a trench-blasting technique that concentrates energy into the rock mass to achieve precise, efficient excavation with minimal damage to surrounding areas.

Process

Our trench-blasting method uses blasting rounds narrower than 4 m. Blast holes are drilled accordingly to ensure precision and control throughout the operation.

Heavily Populated Areas

For trenching in dense areas, we use small drill holes (30–50 mm) and cover blasts with heavy mats or sand to minimize vibrations and prevent fly rock, ensuring safety for surrounding structures and people.

Unpopulated Areas

In open areas, we prioritize efficiency and cost savings, using larger blast holes and protective measures like heavy mats or sand covering to safely maximize rock removal per detonation.



Structural Demolition

Phala Blasting and Civils adopts a strategic and methodical approach to structural demolition, ensuring every building is dismantled safely, efficiently, and with precision. Our team combines advanced demolition techniques, specialized equipment, and strict safety protocols to minimize disruption while maximizing productivity. Whether it's a partial structure removal or a complete demolition, we deliver results that meet project timelines and uphold the highest industry standards.



Quarry, Open Cast, and Borrow Pit Blasting

At Phala Blasting and Civils, we provide specialized blasting solutions for quarrying, open cast mining, and borrow pit operations. Our experienced, licensed blasters use advanced techniques and precision equipment to ensure safe, efficient, and cost-effective rock fragmentation across diverse geological conditions.

Purpose

Our services support aggregate production, material sourcing, and large-scale excavation projects. Whether for construction materials, infrastructure development, or resource extraction, each blast is carefully designed to deliver optimal fragmentation, productivity, and safety.

Process

Every operation begins with a detailed assessment of geological and environmental factors. Our team determines the correct burden, spacing, timing sequence, and explosive type to achieve precise results with minimal vibration, air blast, and fly rock. Controlled detonation systems and modern monitoring tools ensure compliance with the Mine Health and Safety Act and South African Explosives Regulations.



Current Tools

- 1x Hydraulic drill rig
- 5x Site bakkies
- 1x 800 CFM Compressor
- 2x 400 CFM Compressor
- 1x 250 CFM Compressor
- 18x Hand drills



Competitive Advantages

Experience & Expertise

A highly skilled team with extensive experience in blasting and chemical rock removal. We apply proven techniques to deliver precise, safe, and efficient results on every project.

Innovation

Leveraging advanced technologies and chemical agents to tackle complex geological challenges. We continually refine our methods to enhance safety and performance.

Client-Focused

Delivering tailored solutions designed to meet each project's unique requirements and deadlines. We value clear communication and dependable service from start to finish.



COR14.3: Registration Certificate

Registration Number: 2025 / 846420 / 07
Enterprise Name: PHALA BLASTING AND CIVILS

ENTERPRISE INFORMATION

Registration Number 2025 / 846420 / 07
Enterprise Name PHALA BLASTING AND CIVILS
Registration Date 29/10/2025
Business Start Date 29/10/2025
Enterprise Type Private Company
Enterprise Status In Business
Financial Year End May
TAX Number 9238238282
Addresses

POSTAL ADDRESS

14 LE MELEUR
28 HANEKOM
NOORDHEUWEL
GAUTENG
1739

ADDRESS OF REGISTERED OFFICE

14 LE MELEUR
28 HANEKOM
NOORDHEUWEL
GAUTENG
1739

ACTIVE MEMBERS / DIRECTORS

Surname and First Names	Type	ID Number / Date of Birth	Appointment Date	Addresses
COETZEE, KEVIN	Director	0201295105088	29/10/2025	Postal: 14 LE MELEUR, 28 HANEKOM, NOORDHEUWEL, GAUTENG, 1739 Residential: 14 LE MELEUR, 28 HANEKOM, NOORDHEUWEL, GAUTENG, 1739
MOKWENA, LINDA	Director	8702266081085	29/10/2025	Postal: 106 VICTORIA STREET, BRAKPAN, BRAKPAN, GAUTENG, 1541 Residential: 106 VICTORIA STREET, BRAKPAN, BRAKPAN, GAUTENG, 1541





the dtic

Department:
Trade, Industry and Competition
REPUBLIC OF SOUTH AFRICA



Companies and Intellectual
Property Commission
a member of the dtic group

B-BBEE CERTIFICATE FOR EXEMPTED MICRO ENTERPRISES

Issued by the Companies & Intellectual Property Commission (CIPC) on behalf of the Department of Trade and Industry. Based on the Financial Statements/Management Accounts and other information available on the latest financial year-end, the annual Total Revenue was R10,000,000.00 (Ten Million Rands) or less.

This Certificate serves as an Affidavit in terms of Code Series 000, Section 4.5 of the Amended Codes 2013.



Tracking Number: 9446583222



Enterprise Number: K2025846420

B-BBEE LEVEL 2 CONTRIBUTOR: 125% PROCUREMENT RECOGNITION

B-BBEE INFORMATION

Certificate Number	9446583222
Total Number of Shareholders	TWO (2) SHAREHOLDER(S)
Number of Black Shareholders	ONE (1) BLACK SHAREHOLDER(S)
Number of White Shareholders	ONE (1) WHITE SHAREHOLDER(S)
Black Ownership Percentage	51% BLACK OWNERSHIP
Black Female Percentage	0% BLACK FEMALE OWNERSHIP
White Ownership Percentage	49% WHITE OWNERSHIP
B-BBEE Status	B-BBEE LEVEL 2 CONTRIBUTOR: 125% PROCUREMENT RECOGNITION
Date of Issue	28-October-2025
Expiry Date	27-October-2026
<ul style="list-style-type: none">Unemployed black people not attending and not required by law to attend an educational institution and not awaiting admission to an educational institution: 50%Black people who are youth as defined in the National Youth Commission Act of 1996: 0%Black people who are persons with disabilities as defined in the Code of Good Practice on employment of people with disabilities issued under the Employment Equity Act: 0%Black people living in rural and under developed areas: 50%Black military veterans who qualify to be called a military veteran in terms of the Military Veterans Act 18 of 2011: 0%	

ENTERPRISE INFORMATION

Registration number	2025/846420/07
Enterprise Name	PHALA BLASTING AND CIVILS (PTY) LTD
Registration Date	29-October-2025
Enterprise Type	PRIVATE COMPANY
Enterprise Status	IN BUSINESS

Physical Address

the dti Campus - Block F
77 Meintjies Street
Sunnyside 0001

Postal Address: Companies

P O Box 429
Pretoria
0001

Docex: 256

Web: www.cipc.co.za

Contact Centre: 086 100 2472(CIPC)

Contact Centre (International): +27 12 394 9500





South African Revenue Service

TAX COMPLIANCE STATUS

PIN Issued

PHALA BLASTING AND CIVILS
14 LE MELEUR
28 HANEKOM
NOORDHEUWEL
GAUTENG
1739

Enquiries should be addressed to SARS:

Contact Details

SARS
Alberton
1528

Contact Centre Tel: 0800 00 7277
SARS website: www.sars.gov.za

Details

Taxpayer Reference Number: 9238238282

Always quote this reference
number when contacting SARS

Issue Date: 2025/10/29

Dear Taxpayer

TAX COMPLIANCE STATUS PIN ISSUED

The South African Revenue Service (SARS) has issued your tax compliance status (TCS) PIN as indicated below:

TCS Details:	
Taxpayer Name	Phala Blasting And Civils
Trading Name	PHALA BLASTING AND CIVILS
Taxpayer Reference Number(s)	IT - 9238238282
Purpose of Request	Good Standing
Request Reference Number	0058431383GS2910251957132
PIN	B63D15B3EA
PIN Expiry Date	29/10/2026

You may authorise a third party to view your TCS by providing them the PIN. The PIN only allows the third party access to your TCS. All your other tax information remains secure.

Your TCS displayed is based on your compliance as at the date and time the PIN is used.

You may cancel this PIN at any time before the expiry date reflected above. Once cancelled, a third party will not be able to verify your TCS.

SARS reserves the right to cancel the TCS application and associated PIN in the event that it was issued in error or provided on the basis of fraud, misrepresentation or non-disclosure of material facts.

More details regarding our channels, office hours, services, tailored information regarding tax as well as a comprehensive FAQ repository are available on the SARS website: www.sars.gov.za.

We value your support and contribution to our country's economy and prosperity. We strive to ensure that you clearly understand what is expected from you, as well as what your rights as a taxpayer are.

Sincerely

ISSUED ON BEHALF OF THE COMMISSIONER FOR THE SOUTH AFRICAN REVENUE SERVICE



Name: PHALA BLASTING AND CIVILS
Tax reference No: 9238238282
Form ID: TCR00
Contact Version: v2022.03.00
Timestamp: 26076370
Year: 2025
Page of Page: 01/01
Template version: v2022.00.01

www.phalablasting.org

PHALA BLASTING AND CIVILS (PTY) LTD

Registration Number

2025/846420/07


B-BBEE Certificate

9446583222

Address

14 Le Meleur, 28 Hanekom road, Noordheuwel,
Krugersdorp, 1739.



 064 524 5924 (Kevin)
081 585 1908 (Linda)

 linda@phalablasting.org
kevin@phalablasting.org

